



D33 SUV TECHNICAL SPECIFICATIONS

D33 SUV



GENERAL CHARACTERISTICS

Overall Lengths with platforms and options	10.50	m	34.4	ft
Overall Length	10.20	m	33.5	ft
Hull Length	9.35	m	30.7	ft
Beam	3.15	m	10.3	ft
Hull Draught	0.72	m	2.4	ft
Draught to props	1.05	m	3.4	ft
Light Weight - Without engines (estimated)	4550	kg	10031	Lbs
Light Weight - With engines (estimated)	5490	kg	12103	Lbs
Fully Loaded - With engine, crew & options (estimated)	6750	kg	14881	Lbs
Fuel tanks	710	Litres	187	Gallons
Fresh Water Capacity	117	Litres	31	Gallons
Grey Water Capacity	40	Litres	11	Gallons
CE Category	B - C	Category		
Capacity	8 - 10	Persons		
Berths	4			
Power Range	400 - 800	HP		
Hull Design	Adam Younger Design			
Engineering By	Dromeas Design Team			



Optional Equipment are mentioned with an Asterix,\*.



## STANDARD EQUIPMENT

### HULL & DECK CONSTRUCTION

White gelcoat hull & deck Vinylester skincoat  
 Vinylester Sandwich cored GRP hull & deck  
 Vinylester structural construction  
 Integrated Performance Engine Bracket for outboard engines

### HULL & DECK GEAR

Electrical windlass with remote control from console  
 Bowthruster  
 Humphree Interceptor System with auto trim, list & pitch control with underwater lights  
 Heavy duty rub rail  
 Self draining cockpit  
 Self draining anchor locker  
 Stainless steel bow roller  
 Stainless steel deck grab rails  
 2 forward stainless steel mooring cleats  
 2 midship stainless steel cleats  
 2 aft stainless steel mooring cleats  
 Storage lockers under the cockpit floor  
 Swimming platform  
 Deck Shower  
 Telescopic swim ladder  
 Trailer winch ring  
 Stainless steel pulpit

### ANCHORING & MOORING

Anchoring Kit - 12kg galvanised Delta type anchor & 8mm. 50m.  
 Galvanised calibrated chain  
 Mooring Kit - 4 x 14 M 14 mm ropes for docking, 4 Dromeas Yachts fenders

### COCKPIT & DECK

Forward glass windscreen  
 Lateral side windscreens with aluminum framing  
 Opening hatch for direct access from front cabin  
 Foredeck sunbed cushions  
 Rod holders on bulwark x 2  
 Flexiteek cockpit floor & swim platform decking

### INTERIOR

Sliding entrance to companionway  
 Deck windows  
 Access to head  
 Access to technical areas  
 Forward and aft cabin separation with curtains  
 Storage spaces  
 LED ceiling lights  
 USB outlets  
 Interior curtains

### GALLEY

Sink and tap with fresh water option  
 Drawers  
 Storage (optional fridge space)  
 Storage spaces

### FORWARD CABIN

Deck windows  
 Hull windows  
 Opening deck access hatch  
 Double bed  
 Storage under bed  
 Opening hull port lights  
 Access to hull & bow thruster under bed  
 Reading lights

### HEAD

Manual toilet with seawater system with 50L holding tank & deck pump-out  
 Access from companionway  
 Hull windows  
 Sink and tap with fresh water  
 Shower  
 Mirror  
 Storage spaces  
 Ceiling LED lights  
 Access to technical areas

**HELM STATION**

Integrated performance console  
 Dashboard with engine control & space for nav. station  
 Electrical instrument switches  
 Pilot and co-pilot seats  
 Horn  
 Cupholders  
 Console grab rails  
 Storage spaces  
 USB outlet

**SUV PILOTHOUSE**

Sliding starboard door to console with large opening  
 Sliding port door with large opening  
 Sliding entrance to companionway  
 Opening porthole in console to aft cabin  
 Sliding aft window  
 LED ceiling lights  
 Indirect LED ceiling lights  
 Aft bench  
 Storage spaces  
 Stainless steel grab rails  
 Cupholders  
 Access to technical areas

**AFT CABIN**

Double bed  
 Opening porthole

Cupboards  
 LED lighting  
 Reading lights  
 Mirror  
 USB Outlets  
 Storage spaces  
 Access to technical areas

**MECHANICAL EQUIPMENT**

Fresh water system in head and wet bar sink and tap with 100L tank, stainless steel deck filler and cockpit shower  
 Offshore fuel tank  
 Steering wheel in leather with Dromeas logo  
 Stainless steel fixed fuel tank with deck fillers  
 Fuel Sensor  
 Electrical bilge pump x 2  
 Manual bilge pump  
 Windscreen wipers  
 Engine room forced ventilation (only with generator)  
 Automatic fire extinguishing system (only with generator)

**ELECTRICAL SYSTEMS & LIGHTING**

Start battery incl. one per engine  
 Service battery, 2 x 140 Ah  
 Electrical systems control panel  
 Navigation lights  
 Interior indirect LED lighting  
 Cockpit LED courtesy lights

**OPTIONS****EXTERIOR COMFORT**

Hardtop stainless steel roll bar  
 Hardtop aft arch with 4 rod holders  
 Safety doors  
 Aft folding cockpit bench  
 Removable aft cockpit table  
 Aft forward cockpit storage bench (N/A with cockpit wet bar)  
 Aft cockpit removable tent (inc. carbon fibre poles)  
 Forward Comfort Package including cockpit table with conversion to sunbed, anchor locker cushions & Removable foredeck tent (inc. carbon fibre poles)  
 Sea water pump for deck wash  
 Waterski Pole

**COCKPIT WET BAR**

Cockpit Wetbar including Refrigerator & Fresh Water System (N/A with aft cockpit storage seating)  
 Refrigerator 50 L additional  
 Electric Grill - 220V requires inverter

**INTERIOR**

Interior seating adjustable table  
 Composite wooden floors  
 Galley Package with fresh water sink, 50L Refrigerator & Electrical Cooktop - 220V requires inverter

**HEAD**

Upgrade to electrical toilet with seawater system with 50L holding tank & deck pump-out

**MECHANICAL EQUIPMENT**

Hot water system, 220V  
 Diesel Heating system - Webasto  
 Diesel generator - 5kW  
 Air conditioning - 16000 BTU  
 Requires generator

**ELECTRICAL SYSTEMS & LIGHTING**

Chain counter  
 Search light

Shore power connection 220V & battery charger (50A)  
 Inverter 12v/220v 4000W  
 12V Scanstrut Air Station  
 Solar energy pack, 2 x 100W  
 Service Battery Upgrade 2 x 140Ah

**NAVIGATION SYSTEMS**

Navigation Package 2 - Raymarine Axiom+ 12" , 1 kW Bronze Transducer with Dual Frequency, Ray73 VHF Radio with AIS RX (including map)

Navigation Package 2R - Raymarine Axiom+ 12" , Quantum 2 Radome Radar with Doppler , 1 kW Bronze Transducer with Dual Frequency, Ray73 VHF Radio with AIS RX (including map)

Navigation Package 3 - Raymarine 2 x Axiom+ 12" , 1 kW Bronze Transducer with Dual Frequency, Ray73 VHF Radio with AIS RX (including map)

Navigation Package 3R - Raymarine 2 x Axiom+ 12" , Quantum 2 Radome Radar with Doppler , 1 kW Bronze Transducer with Dual Frequency, Ray73 VHF Radio with AIS RX (including map)

Navigation Package 4 - Raymarine 2 x Axiom2 XL16" , 1 kW Bronze Transducer with Dual Frequency, Ray73 VHF Radio with AIS RX (including map)

Navigation Package 4R - Raymarine 2 x Axiom2 XL16" , Quantum 2 Radome Radar with Doppler , 1 kW Bronze Transducer with Dual Frequency, Ray73 VHF Radio with AIS RX (including map)

**ENTERTAINMENT SYSTEMS**

Fusion Marine Stereo Sound System, Control Unit RA60 with Bluetooth & 4 speakers  
 Fusion Sound System Upgrade 1 - additional 2 speakers & 5ch. amplifier & subwoofer (requires Fusion Sound System)

**COVERS**

Winter cover  
 Covers Package including aft & forward cockpit cover



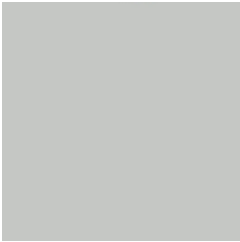


**HULL COLOUR SELECTION**

Pure White (Standard)  
RAL 9003

Military Light Gray  
RAL 7035

Anthracite Gray  
RAL 7015



**SILVERTEX UPHOLSTERY SELECTION**

Mandarin



Macadamia



Sterling



**UPGRADE UPHOLSTERY SELECTION**

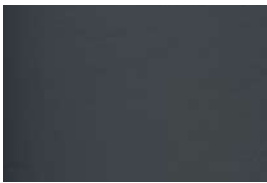
Cognac



Cream



Dark Gray



Dromeas Yachts reserves the right to change the models, technical specifications, prices and the equipment without prior notice and the information herein are not contractual. The performance of the boat may vary due to equipment installed, weather and load conditions. Dromeas reserves the right to modify the specifications of our models without prior notice. Price not including: VAT or taxes, shipping & handling, insurance, engine, batteries, handover and launching. All rights reserved. Dromeas Yachts 2025